

Network Master Pro/Flex Release Notes

Product Configuration

The following table shows the relationship between the changed application and modules described in the Revision History.

Mainframe	Module	Changed Application
MT1100A/MT1000A Common	—	[Framework][Remote]
MT1100A	MU110010A MU110011A MU110012A	[ETH][OTN][CPRI][FC][SDH/SONET][SDHPDH]
MT1000A	MU100010A MU100090A	
	MU100020A MU100021A	[OTDR][FTTA][OLTS]

Latest Installer File Name

MT1000A	MT1100A
5.01.MT1000A_SW MX100001A-Setup-5.01-xxxxx.exe	5.01.MT1100A_SW MX100001A-Setup-5.01-xxxxx.exe

The following table shows the latest software and corresponding operation manuals.

Operation Manual	Doc. No.	MT1000A	MT1100A
MT1000A Network Master Pro MT1100A Network Master Flex Remote Scripting Operation Manual	M-W3736AE	9th	9th
MT1000A MU100010A Network Master Pro Operation Manual	M-W3682AE	10th	9th
MT1000A MU100020A/MU100021A Network Master Pro Operation Manual	M-W3810AE	3rd	—

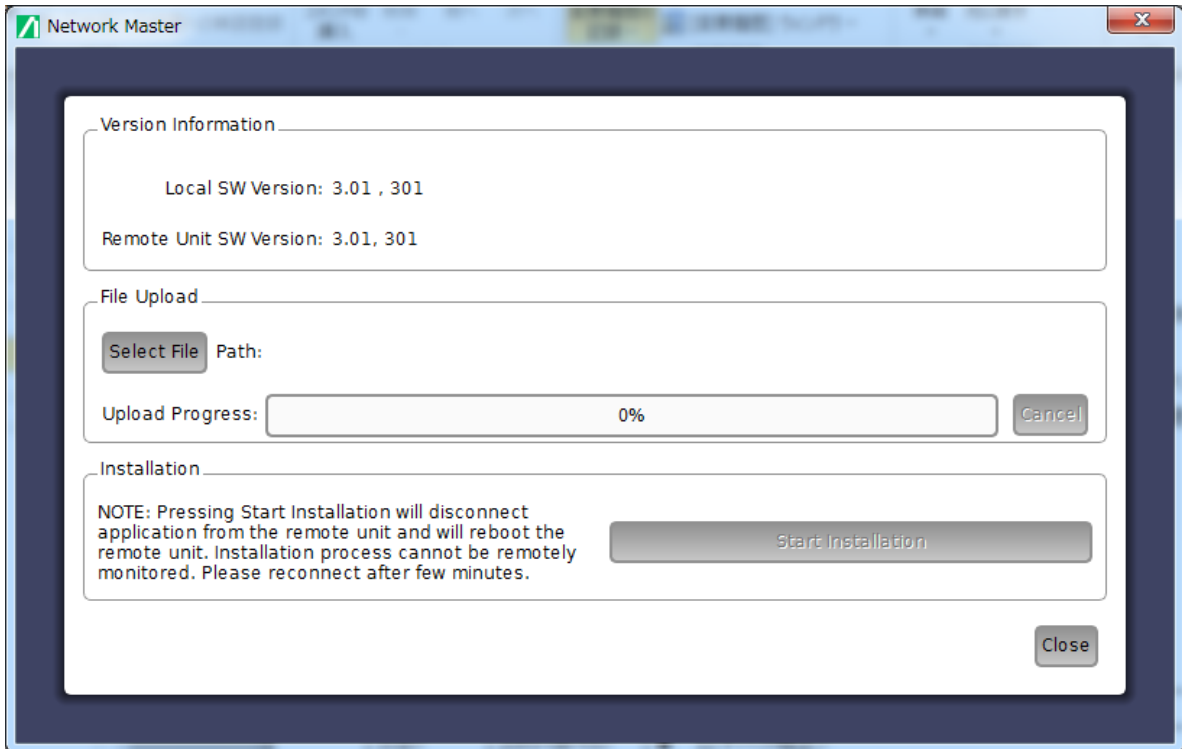
Installation Procedure

1. When using battery, make sure that there is 40% (or more) power in the battery of the instrument.
2. Remove the AC adapter or cable and power off the MT1000A/MT1100A.
3. Copy installer onto an empty USB memory stick.
4. Insert USB memory stick into MT1000A/MT1100A.
5. Boot MT1000A/MT1100A to start installer.
The instrument will detect the USB stick, and start installing the software. After the installation has finished the instrument will reboot and start with the new software.
6. Remove USB stick after installation is complete

You can check the installed version at **System Information** screen.

Installation Procedure via network.

1. When using battery, make sure that there is 40% (or more) power in the battery of the instrument.
2. Install the Control Software(MX100001A) on your PC.
(Please refer “3.5.1 Installation of Control Software” on MT1000A MU100010A Network Master Pro Operation Manual or MT1100A Network Master Flex Operation Manual.)
3. Configure the Ethernet communication between the Control Software(MX100001A) and MT1000A/MT1100A. (Please refer “3.5.2 Connection and Setup” on MT1000A MU100010A Network Master Pro Operation Manual or MT1100A Network Master Flex Operation Manual.)
4. Select the update tab on Control Software to show the upgrading box.



5. Touch Select File to launch the dialog box.
6. Select the software file. Progress bar shows Upload Progress. Touching Cancel aborts the file uploading.
7. After file uploading finishes, touch Start Installation.
Touching Start Installation will reboot the Network Master. Installation process cannot be remotely monitored. Please reconnect after few minutes.

Revision History

Version	Date	Description
5.01	2016-03-25	<ul style="list-style-type: none"> ● Key Added Features <ul style="list-style-type: none"> ➤ [Framework] Added to fiberscope with 60 degrees tip (7961) ➤ [OTDR] Expanded maximum settable pulse width for each distance range (8044) ➤ [OTDR] Changed dummy fiber (launch spool) display color to clearly show the start of the fiber under test. (8045) ➤ [ETH] Added auto MAC address resolution function when a generating IPv6 Stream (NDP NS/NA) (7712) ➤ [ETH] Added possibility to ignore Frame loss seconds count in Ethernet BERT application (8057) ➤ [ETH] In SyncTest application, added calibration parameter for GPS antenna cable length. (8026)

Version	Date	Description
		<ul style="list-style-type: none"> ➤ [ETH] In SyncTest application, added high-resolution frequency counter function (7945) ➤ [OTN] Added LOS insertion function (7366) ➤ [OTN] Added following APS trigger items (7775) OTU3x/4: FAS-OTL, LOF-OTL, OOF-OTL, LOR-OTL, OOR-OTL, OTU1x/2x/3x/4: OTU-AIS, OOM ➤ [SDH] Added possibility to disable the display of Pointer Movement measurements (7905) ● Fixed bugs <ul style="list-style-type: none"> ➤ [Framework] Fixed bug when disabling WLAN sometimes causing instrument to temporarily freeze (8272) ➤ [Framework] Fixed bug causing the NWM Flex with battery option MU11001A from fully shutting down.(8391) ➤ [Framework] Fixed the problem that MU100090A power On/Off status isn't stored properly occasionally. (8273) ➤ [OTDR] Fixed bug that "Restore Default" operation does not work after creating OTDR report.(8448) ➤ [ETH] Fixed bug for 10GbE sometimes causing transmitter to insert wrong IFG (7673) ➤ [ETH] Fixed bug in IEEE1588 function sometimes causing UDP checksum errors in transmitted PTP frames (7835) ➤ [OTN] Fixed problem when starting applications with +OTN option sometimes causing invalid option warning message (7683) ➤ [OTN][ETH] Fixed bug in Ethernet transmitter causing BER alarm when Ethernet mapped over OTN using GFP-F. (7519)(8075) ➤ [OTN][ETH] Fixed bug causing BER alarms for MPLS mapped over OTN using 46 byte frame size. (7844)
5.00	2016-02-19	<ul style="list-style-type: none"> ● Key Added Features <ul style="list-style-type: none"> ➤ Added MU100090A Module ➤ [ETH] Added IEEE1588 Time error measurement function. (7892) ➤ [ETH] Added ITU-T8275.1 profile for IEEE1588 functions (7992) ➤ [CPRI] Added APS measurement function to BERT application (7099)

Version	Date	Description
		<ul style="list-style-type: none"> ➤ [Framework] Expanded MDIO Analysis functions for CFP/CFP2/CFP4. (7976) ➤ [OTN] Added mappings for packet based client signal. (7975,7977,7978) ➤ [OTN][SDH] Added BERT/APS/RTD switch mode to BERT application (7980) ➤ [OTN][SDH] Added SDH Transparent mapping for SDH over OTN start (7981) ➤ [Remote] Added support for VNC control via HTTP with JAVA 1.8 (6353) ➤ [Remote] Added support for simultaneous SCPI and Remote GUI control (7681) ➤ [Remote][ETH] Added remote command for specifying save destination for IEEE1588/SyncE Frame capture data (8198) - ETH:PORT1:PTP:FCAP:DIR ➤ [Remote][ETH] Added following remote commands for performing IEEE1588 ARP analysis and querying analysis results (8157) - ETHernet:PORT<Pt>:PTP:MAC:ARP - ETHernet:PORT<Pt>:PTP:MAC:ARP:RESult? ● Fixed bugs <ul style="list-style-type: none"> ➤ [OTDR] Upgraded Event (fault point) detection (search) accuracy (8034) ➤ [Framework] Fixed problem causing Chinese and Japanese UTF-8 encoded CSV reports to display garbage characters when opened in MS-Excel. (7750) Japanese: UTF-8 to Shift JIS Chinese: UTF-8 to GB2312 ➤ [Framework] Fixed bug preventing re-acquisition of IP address when switching WLAN access point (7360) ➤ [Framework] Simplified Password dialog and fixed problem when initially enabling system password protection requiring user to know old (default) password. (7551) ➤ [Framework] Fixed bug causing sudden shutdown when starting with remaining battery charge of ≤6% (7662) ➤ [ETH] Fixed bug only permitting insertion of less than assumed block errors when inserting errors while testing at Frame rates

Version	Date	Description
		<p>of >2000 bytes when testing at interface of 10/40/100 Gbps (7020)</p> <ul style="list-style-type: none"> ➤ [ETH] Fixed bug causing Frame loss when receiving IPv4 + UDP header Ethernet Frame when Frame length not multiple of 8 bytes at 40/100GbE (7836) ➤ [ETH] Fixed bug restricting the minimum payload size of 38-byte when selecting custom header at BERT application stream setting (7725) ➤ [ETH] Fixed bug causing [Timing: Bit rate Difference] to remain unchanged at 0 even when clearing History at Ethernet test (6884) ➤ [ETH] Fixed bug causing IEEE1588 status Wall Clock Current time affects from local MT1000A time setting (7850) ➤ [ETH] Fixed bug causing sending of incorrect time data at IEEE1588 communications (7715) ➤ [ETH] Fixed bug causing display of NMX_WARNING message when starting Ethernet application when 100GbE option installed with MT1100A+MU110011A+MU110012A configuration (7904) ➤ [ETH] Fixed bug causing main unit to reboot when switching BERT application custom header settings when loading settings file saved with V2.xx when using V3.03 software (7894) ➤ [ETH] Fixed bug causing display of NMX_WARNING message when executing ARP on IEEE1588 function (8112) ➤ [ETH] Fixed bug causing IP header protocol type field setting to become UDP(0x11) or TCP(0x06) automatically after previous setting when None set after setting Frame Format Layer 4 to either TCP or UDP (7777) ➤ [OTN] Fixed bug causing display of screen for making additions when low-order ODU errors and alarms cannot be inserted at OTN through-mode test (6950),(6643) ➤ [Remote] Fixed bug preventing release of port resources even when executing INST:TERM command (7369) ➤ [Remote] Fixed bug preventing normal termination processing of application when using multiple user control by SCPI command (7816,7847,7029,7968) ➤ [Remote] Fixed bugs causing MX100001A to crash at following

Version	Date	Description
		<p>operations. (7933)</p> <p>(1) At remote connection from MX100001A when measuring instrument Remote PC connection set to OFF</p> <p>(2) When changing measuring instrument Remote PC connection setting from OFF to ON</p> <p>(3) At remote connection from MX100001A</p> <ul style="list-style-type: none"> ➤ [Remote][ETH] Removed explanation of following unsupported commands: (7537) <ul style="list-style-type: none"> - EThernet:CStat:SEtUp:PORT<Pt>:PSElect - EThernet:CStat:SEtUp:PORT<Pt>:PWIDth? ➤ [Remote][OTN] Fixed bug preventing correct reading of PSI[0] value using OH capture remote query command (7788) ➤ [SDH/SONET] Fixed bug preventing reflection of measured error in test results during measurement with APS application (6982) ➤ [Wireshark] Fixed bug causing Wireshark restart when reading file format not supported by Wireshark (7595)
4.00	2015-12-10	<ul style="list-style-type: none"> ● Key Added Features <ul style="list-style-type: none"> ➤ [OTDR][FTTA][OLTS] Added New OTDR Module for MT1000A <ul style="list-style-type: none"> MU100020A OTDR Module 1310/1550 nm SMF MU100021A OTDR Module 1310/1550/850/1300 nm SMF/MMF ● Fixed bugs <ul style="list-style-type: none"> ➤ [Framework] Fixed problem causing Chinese and Japanese UTF-8 encoded CSV reports to display garbage characters when opened in MS-Excel. <ul style="list-style-type: none"> Japanese: UTF-8 to Shift JIS Chinese: UTF-8 to GB2312 ➤ [Framework] Simplified Password dialog and fixed problem when initially enabling system password protection requiring user to know old (default) password. ➤ [ETH] Fixed problem in RFC2544 application causing instrument to restart when transmitting IPv6 formatted Learning Frames. (7808) ➤ [ETH] Fixed problem preventing saving of PTP message logs at IEEE 1588v2 log. (7421) ➤ [ETH] Fixed problem running 10G with frame sizes above 2000

Version	Date	Description
		<p>bytes, sometimes preventing insertion of sufficient block errors using error insertion function. (7020)</p> <ul style="list-style-type: none"> ➤ [OTN] Fixed problem reading PSI[0] OH byte (Payload type) using SCPI command. (7788)
3.04	2015-11-06	<ul style="list-style-type: none"> ● Fixed bugs <ul style="list-style-type: none"> ➤ [OTN] Fixed bug preventing normal detection at continuous OLA alarm (7703) ➤ [OTN] Fixed problem preventing PM-BIP and PM-BEI errors being reported in Event Log. (7702) ➤ [OTN] [ETH] Fixed problem causing Warning message while re-loading settings file generated in an Ethernet over OTN application. (7727) ➤ [ETH] Fixed problem causing instrument to restart when using Layer 2 custom header and exceeding the setup frame length by enabling either Jitter or Latency measurement. (7674) ● [ETH] Fixed problem with Latency result sometimes being incorrect when measuring between two ports on same module. (7691)
3.03	2015-10-02	<ul style="list-style-type: none"> ● Key Added Features <ul style="list-style-type: none"> ➤ [Remote] Added Remote Commands and Application Parts. ➤ [ETH] Added Function for Custom Editing of Ethernet Header. ➤ [ETH] Added Function for Validating PCS at 10 GbE. ➤ [ETH] Added Function for continues Stream address Creation. ➤ [OTN] Added Null to Client Signals for OTN Mappings. ➤ [ETH] Enhanced RFC2544 GUI for Easier Access and Better Overview. ➤ [ETH] Enhanced RFC2544/Y.1564 Reporting Providing More Information. ➤ [ETH] Renamed 'CFI' bit in VLAG tag to 'DEI' according to 2015 version of IEEE802.1Q. ➤ [Framework] Improved Report Layout: Better Look and Distinct Header Styles. ➤ [Framework] Added Function for Filtering Results Display at Report Output. ● Fixed Bugs <ul style="list-style-type: none"> ➤ [Framework] Fixed problem with removing USB storage while viewing PDF or XML file stored on device (7359) ➤ [Framework] Fixed problem with garbage characters sometimes

Version	Date	Description
		<p>occurring in Japanese PDF reports created using MX100001A Control Software and read under Windows 7 64-bit OS environment (7028)</p> <ul style="list-style-type: none"> ➤ [ETH] Fixed problem with IEEE 1588 Log sometimes repeating old events. (7390) ➤ [ETH] Fixed problem with PTP clock system when running high rates of Sync/Announce/Delay Request packets for IEEE 1588 protocol data (7389) ➤ [ETH] Fixed problem with 40/100G Reflector application causing statistics engine to drop frames when swapping of IP/MAC disabled (7376) ➤ [ETH] Fixed problem initiating OAM 802.ah Remote Loopback on Accedian NIDs (7365) ➤ [ETH] Fixed problem with Disruption errors sometimes reported in Event Log while running RFC 2544 Latency Test (7361) ➤ [ETH] Fixed problem with Pass-Through application running GbE electrical causing dropped frames when changing clock advertisement (master/slave) configuration (7284) ➤ [ETH] Fixed problem with storing RFC 2544 result files when test includes more than 148 steps (7136) ➤ [ETH] Fixed problem with the Unicast/Multicast Tx frame counters on "Ethernet - Transmit" statistics page not updating when U/L bit of destination MAC address set (7108) ➤ [ETH] When using GPS as Master Clock reference for IEEE1588v2, fixed problem with current Wall Clock differing from displayed UTC time (6996) ➤ [ETH] For RFC 2544 and SAT (Y.1564) applications running end-to-end network test, fixed problem with "Abort" window remaining on slave after test finishes (6957) ➤ [ETH] For SAT Y.1564 and Mon/Gen. applications, fixed problem with automatically stored settings files potentially causing applications to fail when re-launched (6956)(7529) ➤ [ETH] Solved problem with disabling SyncE sometimes leaving pending SSF Alarm History and Event Log entry (6912) ➤ [ETH] Fixed problem with local port losing link when inserting "No Link" alarm, although incoming signal OK (6877) ➤ [ETH] Corrected table headings in RFC 2544 Latency report

Version	Date	Description
		<p>when "Mesaure jitter by means of Latency test" enabled (7538)</p> <ul style="list-style-type: none"> ➤ [OTN] Fixed problem with not showing correct values for GMP Justification Max/Min Cm. (7482) ➤ [OTN] Fixed problem when using multistage mapping on OTN where "false" LOFLOM alarms sometimes reported on lower-order ODUs (7006) ➤ [PDH] Fixed problem on E1 interface when Distant and No CAS MFAS alarms sometimes also insert pattern errors (7019) ➤ [SDH/SONET] Fixed problem with duplication of APS detailed results when switching between ports (7382) ➤ [Remote][NoFrame] Fixed problem setting Frequency Offset via SCPI: NFRame:PORT<Pt>:STIMuli:TX:FOFFset <offset> (7465) ➤ [Remote] Fixed problem with instrument potentially freezing/restarting when SCPI session closed immediately after starting or terminating application server (7012) (7347) ➤ [Remote] Fixed problem copying multiple files simultaneously to PC from MT1000A/MT1100A using MX100001A Remote Control Software (6986) ➤ [Remote][CPRI] Fixed problem using <ul style="list-style-type: none"> ✧ MEASurement:SETup:EVALuation:RX:INTerface? command in CPRI BERT application (6992)" ➤ [Remote][CPRI] When running CPRI Pass-Through application, fixed problem preventing use of SCPI commands for setting evaluation of measurement results (7042) <ul style="list-style-type: none"> ✧ MEASurement:SETup:EVALuation:RX<Pt>[:ENABLE] ✧ MEASurement:SETup:EVALuation:RX<Pt>:INTerface ✧ MEASurement:SETup:EVALuation:CPRI:PORT<Pt>:ITEM ✧ MEASurement:SETup:EVALuation:CPRI:PORT<Pt>:ITEM:ALARm ✧ MEASurement:SETup:EVALuation:CPRI:PORT<Pt>:ITEM:ERRor ✧ MEASurement:SETup:EVALuation:CPRI:PORT<Pt>:TYPE ✧ MEASurement:SETup:EVALuation:CPRI:PORT<Pt>:CNT:FAIL ✧ MEASurement:SETup:EVALuation:CPRI:PORT<Pt>:RATio:PASS ✧ MEASurement:SETup:EVALuation:CPRI:PORT<Pt>:RATio:FAIL ✧ MEASurement:SETup:EVALuation:TMBPs:RX<Pt>:ITEM" ➤ [Remote][ETH] Fixed problem with SCPI command for setting stimuli alarm state (ETHernet:POER<Pt>:STIMuli:ALARm)

Version	Date	Description
		<p>unnecessarily resetting electrical PHY, causing link loss for several seconds (6993)</p> <ul style="list-style-type: none"> ➤ [Remote][OTN] When configured via SCPI remote control, fixed problem with Ethernet client not obtaining link when mapped to OTU3/4 using GFP-T (6955) ➤ [OTN] Fixed problem using SCPI MAX and DEF parameter values for setting Error Bits for GMP JC1/JC2 Error Items (6775) <ul style="list-style-type: none"> ✧ OTN:STIM:TX1:GMP:AEIN:EBIT MAX ✧ OTN:STIM:TX1:GMP:AEIN:EBIT DEF
3.02	2015-07-29	<ul style="list-style-type: none"> ● Fixed Bugs <ul style="list-style-type: none"> ➤ [Framework] Fixed Problem of Incorrectly Loading Configuration File made Using MT1000A/MT1100A with Different Options.(7110,7053,7038,7000) ➤ [Framework] Using Remote GUI Software (MX100001A), Fixed Problem Causing Inability to Start Editor and Viewer.(6990) ➤ [ETH] Removed “Communication Port” for RFC 6349 End-to-End Test.(7172) ➤ [ETH] Fixed Problem of Failing to Reflect “Expected preamble length” Value at Loading Configuration File for Ethernet Pass Through Application.(7156) ➤ [ETH] Using Ethernet BERT Application, Fixed Problem of Incorrect File Save/Read when Stream Setting for Port 2 and Later Ports set to Unframed.(7041) ➤ [ETH] Using Ethernet application, fixed problem causing inability to reboot main frame when sending following query commands and quitting application.(7022) <pre>ETHernet:PORT<Pt>:OAM:DISCoverry:CATalog?</pre> ➤ [ETH] Fixed Problem of Disappearing Latency Results when Saving and Loading Latency/Burst Result using RFC 2544 Application.(7010) ➤ [ETH] Using Ethernet BERT Application, Fixed Problem Causing Frame Loss when Reading V2.04 Settings File.(7004) ➤ [ETH] After executing Ethernet Ping function, fixed problem causing reboot when executing other Ethernet application.(6999) ➤ [ETH] Using Ethernet Application, Fixed Problem Causing

Version	Date	Description
		<p>Screen Freeze when Sending/Receiving OAM 802.1ag/VLAN CCM.(6980)</p> <ul style="list-style-type: none"> ➤ [ETH] Added following query parameters to SCPI commands.(6975) Ethernet:PORT<Pt>:IFETch? TDL: Stream 1 Throughput Data Layer (bps). Response: <Min>,<Max>,<Avg> TNL: Stream 1 Throughput Network Layer (bps). Response: <Min>,<Max>,<Avg> TLL: Stream 1 Throughput Link Layer (bps). Response: <Min>,<Max>,<Avg> TPPL: Stream 1 Throughput Physical Layer without Preamble (bps). Response: <Min>,<Max>,<Avg> TPL: Stream 1 Throughput Physical Layer (bps). Response: <Min>,<Max>,<Avg> TUL: Stream 1 Throughput Utilization Layer (bps). Response: <Min>,<Max>,<Avg> ➤ [ETH] Using Ethernet Application, at ARP Reply Sending, Fixed Rare Problem Causing Sending of Excess Stream Data in 1 Frame.(6970) ➤ [ETH] Using Ethernet Application, Fixed Problem Sometimes Blocked Correct traffic with "Include addresses in frame filter on receiver" Settings at Rx Operation.(6964) ➤ [OTN] Fixed Problem of Wrongly Configuring FC800 at Loading of FC400 Configuration File for FC BERT over OTN.(7169) ➤ [OTN] Fixed Boot Failure Problem of FC BERT over OTN Application.(7166) ➤ [OTN] Fixed problem causing no response when sending OTN:RX<Pt>:IFET ch? S0MSIM SCPI command.(7066) ➤ [OTN] Using OTN Application, Fixed Problem of Wrongly Displaying MSIM Results Without Masking even at Higher-Level Alarm.(7066) ➤ [OTN] Using OTN application, fixed problem of incorrectly reading Performance measurement results using SCPI command when reading V2.02 or earlier results file.(7066) ➤ [OTN] Fixed Problem Causing Higher-Level Summary LEDs to Light when cHEC and tHEC Errors Detected at GFP-F/T

Version	Date	Description
		<p>Mapping of OTN Application.(6972)</p> <ul style="list-style-type: none"> ➤ [OTN] Fixed Problem of Failing to Count Justification when LOFLOM Detected using OTN Application.(6962) ➤ [SDHPDH] Changed mistakes in SCPI command parameter names.(7140) <ul style="list-style-type: none"> T1:RX<Pt>:IFETch? (NFRame) -> (OOF) T1:APS:RX<Pt>:EVENT NFR -> OOF T1:STATus:RX<Pt>:ALARm? Loss Of Frame -> OOF TMBPs:APS:RX<Pt>:EVENT NFR -> NFRame - similar GUI value "LOF"-> "No frame" ➤ [SDHPDH] Using SDH/PDH application, fixed problem of inability to reboot main frame when sending following query commands and quitting application.(7031) <ul style="list-style-type: none"> E3:RX1:IFET? (PBBE) ➤ [SDHPDH] Added E1 Balanced connector pin assignments to manual.(6958) ➤ [SDHPDH] Fix problem causing reboot when loading settings file with set PDH rate at MU110011A module.(6915) ➤ problem preventing use of threshold parameters set by following SCPI commands at evaluation of actual measurement results.(7042) <ul style="list-style-type: none"> MEASurement:SETup:EVALuation:RX<Pt>:[:ENABLE] MEASurement:SETup:EVALuation:RX<Pt>:INTERFACE MEASurement:SETup:EVALuation:CPRI:PORT<Pt>:ITEM MEASurement:SETup:EVALuation:CPRI:PORT<Pt>:ITEM:ALARm MEASurement:SETup:EVALuation:CPRI:PORT<Pt>:ITEM:ERROR MEASurement:SETup:EVALuation:CPRI:PORT<Pt>:TYPE MEASurement:SETup:EVALuation:CPRI:PORT<Pt>:CNT:FAIL MEASurement:SETup:EVALuation:CPRI:PORT<Pt>:RATIo:PASS MEASurement:SETup:EVALuation:CPRI:PORT<Pt>:RATIo:FAIL MEASurement:SETup:EVALuation:TMBPs:RX<Pt>:ITEM ➤ [CPRI] Fixed Problem of Incorrect RTD Result Display at Each Testing Interval of CPRI BERT Application.(6875) ➤ [FC] Fixed Problem of Missing CRC Error in Errors/Alarms List of Fibre Channel BERT Application.(6862)
3.01	2015-06-05	<ul style="list-style-type: none"> ● Key Added Features <ul style="list-style-type: none"> ➤ [All] Added Error/Alarm indication summary.(6888)

Version	Date	Description
		<ul style="list-style-type: none"> ➤ [All] Added Performance Verification date in test report.(6890) ➤ [All] Added Spanish Language support.(6891) ➤ [Framework] Added the functionality of Storage formatting.(6895) ➤ [RemoteGUI] Added "Settings Editor" and "Result Viewer" on MX100001A (Windows application).(6894, 6942) ➤ [ETH] Added the functionality of “ Answering ARP/PING request” and reflector MAC/IP address settings on Reflector application. (6897) ➤ [OTN] Added the client signal frequency result.(6887, 6868) ➤ [OTN] Added “Pattern Bit Error Trigger” and ”LOS Trigger” on APS application. (6867) ➤ [ETH] Added “LOS” as a Ethernet Service Disruption test type for optical interfaces ● Fixed Bugs <ul style="list-style-type: none"> ➤ [Framework] Fixed battery display information to show correctly on MU110001A. (6902) ➤ [RemoteGUI] Fixed the problem regarding sorting files on windows application.(6878) ➤ [ETH] Fixed the problem regarding SCPI command for stream Line load. (6866) ➤ [ETH] Fixed the problem regarding multi stream measurement on Mon/Gen application. (6940) ➤ [ETH] Fixed the problem regarding SDT(Service Disruption Time) result. (6857) ➤ [ETH] Fixed the problem regarding long term measurement on PING application. (6834) ➤ [ETH] Fixed the problem regarding the variable field of VLAN ID. (6860) ➤ [ETH] Fixed the problem regarding Remote Fault on Electrical Interface.(6859) ➤ [ETH] Fixed the problem regarding the maximum rate(CIR/EIR) on 40/100G Y.1564 application. (6855, 4246) ➤ [FC] Fixed the problem regarding SDT(Service Disruption Time) result. (6863) ➤ [FC] Fixed the problem regarding “Frame Loss Seconds” result.

Version	Date	Description
		<p>(6864)</p> <ul style="list-style-type: none"> ➤ [OTN] Fixed application crash issue when starting a measurement with threshold enabled. (6939) ➤ [OTN] Improved regarding frequency offset.(6887)
3.00	2015-05-25	<ul style="list-style-type: none"> ● Added CPRI applications.(6465) ● Added following functions to Ethernet applications: <ul style="list-style-type: none"> ➤ Added RFC6349 application.(6366) ➤ Added Layer 2 frame format support on Y.1564 application.(6398) ➤ Added automatic service name on Y.1564 application.(6360) ➤ Added “Include addresses in frame filter on receiver ON/OFF” on RFC2544/Y.1564/MonGen applications.(6557) ● Added following functions to OTN applications: <ul style="list-style-type: none"> ➤ Added 3stage mapping on OTU3/4.(6369) ➤ Added BMP mapping of SDH client.(6372) ➤ Added FTFL alarm insertion/detection.(6373) ➤ Improved the setting order of OTN Client.(6374) ➤ Supported GFP-F Client signal up to 100G.(6369) ➤ Added Error/Alarm statistics on APS application.(6399) ● Added following functions to SDH applications: <ul style="list-style-type: none"> ➤ Added Pattern Error Trigger on APS application.(6419) ➤ Added Error/Alarm statistics on APS application.(6399) ● Added following functions to FC applications: <ul style="list-style-type: none"> ➤ Added Frequency offset Insertion/Monitor.(6405) ➤ Added Reflector application. ● Added following common functions: <ul style="list-style-type: none"> ➤ Added GUI remote functionality from PC.(6342,6341) ➤ Added Event Log functionality.(6400) ➤ Added VIP application on Utility.(6367) ➤ Added MDIO analysis functionality for CFP module.(6351) ➤ Added electrical extender module support.(6483) ➤ Added external 10MHz clock support.(6464) ➤ Added Emphasis and Equalizer functionality for CFP/CFP2.(6352) ➤ Added Swedish keyboard input support.(6345) ➤ Added CSV format report support.(6340) ➤ Improved Utility Icon visualization.(6365,6362,6361)

Version	Date	Description
		<ul style="list-style-type: none"> ➤ Fixed Bugs [All] Fixed the problem that CFP2 interface may not work correctly when configuring the timing source, "Received".(6667) ➤ [All] Fixed the problem that MT1100 which mounts MU110010A sometimes shutdown when launching with battery.(6880) ➤ [SCPI] Fixed the problem of Measurement Stop just after Measurement Start.(6726) ➤ [SCPI] Improved the stability of long term SCPI running.(6707) ➤ [ETH] Fixed the problem that MPLS-TP result does not count up when MPLS-TP OAM frame received.(6762) ➤ [ETH] Fixed the problem regarding E2E communication between MT1000/MT1100 and CMA3K on RFC2544 application.(6735) ➤ [ETH] Fixed the problem regarding selection of throughput type on RFC2544 application.(6658) ➤ [ETH] Improved the stability of long term running on RFC2544 application.(6656, 6644) ➤ [ETH] Fixed the problem that SDT result resets when LOS detected.(6570) ➤ [ETH] Fixed the problem regarding PCS alarm LED.(5892) ➤ [OTN] Fixed the problem regarding the mapping for 10GbE into ODU2e, mapping procedure is AMP (Asynchronous CBR Mapping). (6372) ➤ [SDH] Fixed the problem regarding Performance measurement.(5419) ➤ [FC] Fixed the problem regarding SDT measurement.(6531) ➤ [FC] Fixed the problem that undersize frame sometimes counts.(6254) ➤ [NoFrame] Fixed the problem regarding the BERT measurement result on NoFrame application.(6733) ➤ [ETH] Default setting of throughput calculation layer is changed on RFC 2544 ➤ [ETH] Fixed the process of handling larger test results than the available storage on RFC 2544 ➤ [ETH] RFC 2544 "Average Throughput" test calculation fixed by only calculating during a stable data stream

Version	Date	Description
2.05	2015-03-25	<ul style="list-style-type: none"> ● Bug fixes and Improvements <ul style="list-style-type: none"> ➤ [OTN] Fixed the problem regarding the error on OUT3-40GbE mapping.(6454) ➤ [All] Fixed the problem on MU110001A without battery operation. (Bug only for ver. 2.04) (6411) ➤ [All] Fixed the problem that application crashed after long term running.(6455, 6552) ➤ [All] Fixed the problem regarding the network configure on the Ethernet Service Interface.(6461)
2.04	2015-01-22	<ul style="list-style-type: none"> ● Enhancements <ul style="list-style-type: none"> ➤ [SCPI] Added the launching GUI command and the functionality of switching control between the GUI and Remote.(6355) ➤ [PDH] Added the PRBS31 test pattern on E3.(6064) ● Bug fixes and Improvements <ul style="list-style-type: none"> ➤ [OTN] Fixed the problem regarding through mode.(6386) ➤ [OTN] Fixed the problem regarding the Performance measurement. (6264) ➤ [OTN] Fixed the problem regarding the OTN payload type setting/detection for ODU4-ODU2e-10GE mapping. (6401) ➤ [ETH] Fixed the problem regarding transmitting stream on 40/100G.(6281) ➤ [ALL] Improved the stability when measuring.(6376,6229)
2.03	2014-12-18	<ul style="list-style-type: none"> ● Bug fixes and improvements <ul style="list-style-type: none"> ➤ [OTN] Added some Errors (LLM-OTL, MFAS-OTL). (6262) ➤ [OTN] Added some Error Trigger Type on APS measurement. (6261) ➤ [OTN] Changed the name of some Errors. (OTL, LOA, LOBL, LOAML) (6262) ➤ [SDH] Improved the updating results on Pointer Movement measurement. (6265) ➤ [ETH] Fixed the problem regarding the showing service number on Y1564 application. (6295) ➤ [ETH] Fixed the problem of End to End measurement on Y.1564 application. (6291) ➤ [ETH] Fixed the problem that HiBER is not detected. (6230) ➤ [FW] Fixed the problem regarding the VNC connections. (6243)

Version	Date	Description
		<ul style="list-style-type: none"> ➤ [FW] Fixed the problem regarding the Battery information on MT1100.(6020) ➤ [RFS] Supported ETSI R&TTE EN300 328 V1.8.1. (6263) ➤ [RFS] Improved the stability on all applications. (6318) ➤ [RFS] Improved the stability of the Ethernet Service Interface. (6404)
2.02	2014-11-11	<ul style="list-style-type: none"> ● Bug fixes and improvements <ul style="list-style-type: none"> ➤ [OTN] Fixed the bug which is on decode of ITU-T G709 PSI[0].(6231) ➤ [ETH] Fixed the bug that NMX_ASSERT is sometimes occurred. (6232) ➤ [FC] Fixed the bugs which are interoperability issue and some minor issues. (5088, 6253, 6254) ➤ [Wireshrak] Fixed the bugs and improved the stability.(6166)
2.01	2014-10-23	<ul style="list-style-type: none"> ● Support for the following products: <ul style="list-style-type: none"> ➤ MT1100A Network Master Flex Mainframe ➤ MU110010A 10G Multirate Module ➤ MU110011A 100G Multirate Module ➤ MU110012A 40/100G Module CFP2 ● Added Fibre Channel applications ● Added following functions to Ethernet applications: <ul style="list-style-type: none"> ➤ Support for WAN-PHY interface ➤ Frame capture include Wireshark ➤ Channel Statistics ● Added following functions to OTN applications: <ul style="list-style-type: none"> ➤ GFP-F mapping ➤ FC client mapping ● Bug fixes and improvements
1.00	2014-06-23	<ul style="list-style-type: none"> ● Initial release. Support for the following products: <ul style="list-style-type: none"> ➤ MT100A Network Master Pro Mainframe ➤ MU100010A 10G Multirate Module

Known Problems

	Version	Description
MT1000/MT1100 MU100010A	V5.01	<ul style="list-style-type: none"> ● [CPRI] Pass-through delay for CPRI interface depends on previous port mode setting. The Pass-through delay which

	Version	Description
MU110010A MU110011A MU110012A		<p>previous port mode is OFF is three times than the previous port mode is NORMAL.(6876)</p> <ul style="list-style-type: none"> ● [ETH] Service Disruption Time result is ± 300 ms measurement accuracy when using CFP2 interface of Ethernet BERT application (6858) ● [ETH] Using Ethernet RFC 2544 Application, Mis-calculates Frame Loss Rate when ""Accumulated Repeated Steps"" enable (6445) ● [ETH] Burst count increases when transmitting Random frame sizes at 100% utilization (7114) ● [ETH] In Ethernet Reflector application, when handling incoming special frames like ARP or PING requests, sometimes packets dropped in reflected traffic (6965)

РАДАР - ОФИЦИАЛЬНЫЙ ПРЕДСТАВИТЕЛЬ ANRITSU



РОССИЯ, 198152, Санкт-Петербург
 Краснопутиловская ул., д.25
 Тел./факс +7 (812) 600-48-89
 Тел.: +7 (812) 375-32-44
www.radar1.ru
info@radar1.ru